

GENERAL REMARKS and BUILDING METHOD:

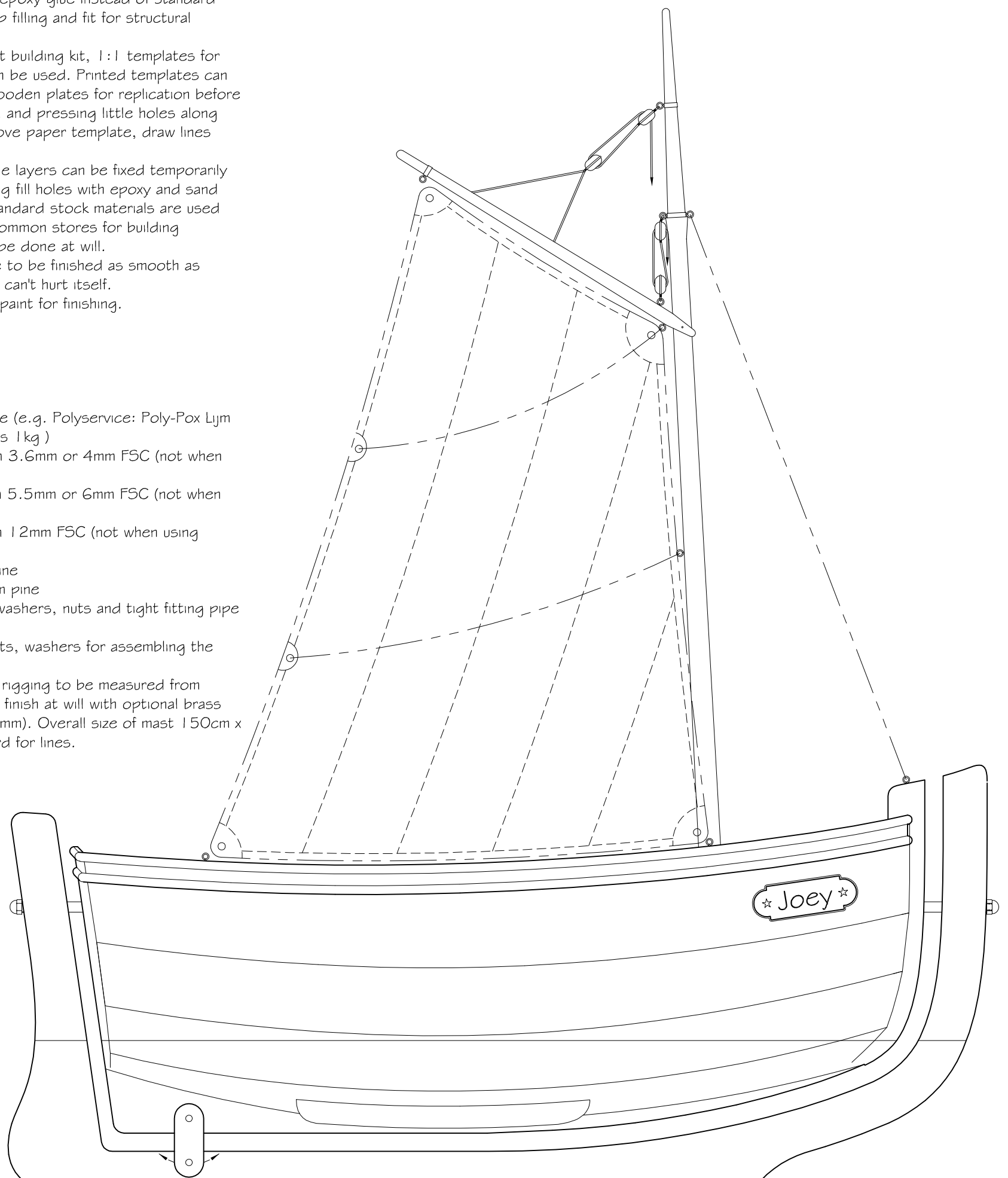
- The building method of the hull is based on the 'stitch-and-glue' technique, connecting the hull strakes temporary with 0,8mm wire until the epoxy has cured. After curing the wire needs to be removed again. Advised is to use 2 component epoxy glue instead of standard wood glue. Epoxy is gap filling and fit for structural connections.
- When not using a precut building kit, 1:1 templates for plywood plate parts can be used. Printed templates can be laid on top of the wooden plates for replication before cutting (e.g. using a nail and pressing little holes along the part contours, remove paper template, draw lines through holes).
- Parts build up by multiple layers can be fixed temporarily with screws. After curing fill holes with epoxy and sand
- As much as possible standard stock materials are used and can be bought at common stores for building materials. Finishing can be done at will.
- The inside of the cradle to be finished as smooth as possible so that a baby can't hurt itself.
- Choose a child friendly paint for finishing.

BASIC MATERIALS HULL:

- 2 component epoxy glue (e.g. Polyservice: Poly-Pox Lijm 700 pasteuze epoxyhars 1 kg)
- 4x Multiplex 122x61 cm 3.6mm or 4mm F5C (not when using precut kit)
- 2x Multiplex 122x61 cm 5.5mm or 6mm F5C (not when using precut kit)
- 3x Multiplex 122x61 cm 12mm F5C (not when using precut kit)
- 8mtr halfround 12mm pine
- 3mtr rectangular 8x4mm pine
- M10 studs with brass washers, nuts and tight fitting pipe for rocking functionality
- M8 studs with brass nuts, washers for assembling the frame and rock locking
- Cradle cover ('sail') and rigging to be measured from drawing (scale 1:4) and finish at will with optional brass hardware (strip 6 x 0.8mm). Overall size of mast 150cm x Ø3cm. 3mm cotton cord for lines.

STUDYPLAN

BABY BOAT CRADLE "JOEY"



IMPORTANT / DISCLAIMER:

- The design of the baby boat cradle as shown here is as is and functions as a basis for the builder to create a unique baby cradle in the shape of a boat
- In building this cradle the builder explicitly takes all responsibility for a rigid and sturdy finishing making it fit and save for the intended use. To the fullest extent permitted at law, neither Manta Marine Design nor any of its affiliates, partners, members, employees or other representatives will be liable for any damages arising out of using this design information. Builder takes all responsibility to finish the cradle to applicable laws when necessary.
- The rocking option is optional and when applied, builder takes all responsibility that working and finishing of this functionality will be safe for all intended use.

BABY BOAT CRADLE "JOEY"

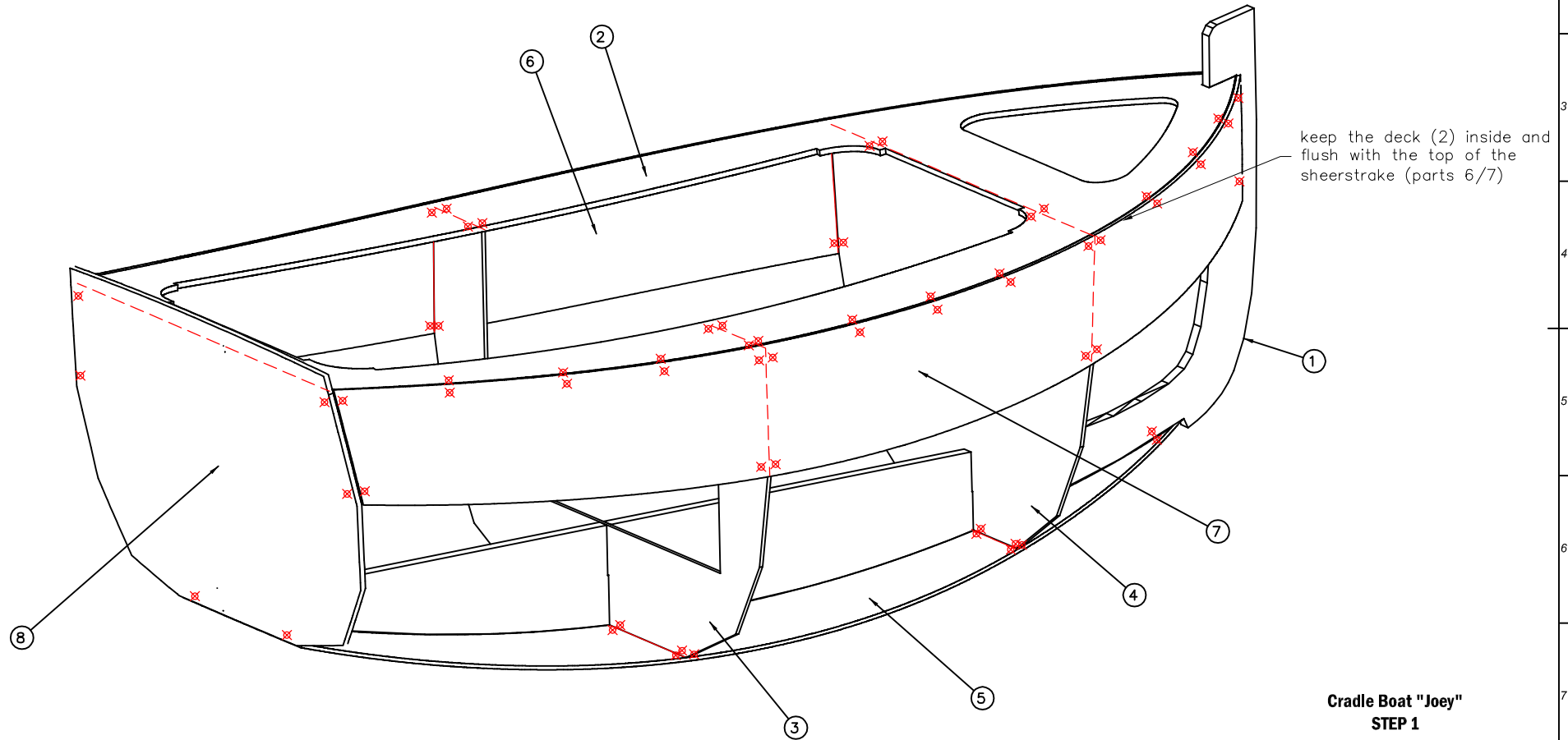
Principle dimensions

Length over all	: 135 cm
Width over all	: 75 cm
Base frame	: 75 x 75 cm
Height bed/deckedge	: 85 cm
Height mast	: 200 cm

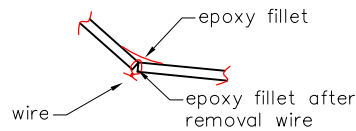
Bill of Material

Item	Part Name	Qty	Stock Name	Weight (kg)	Length (mm)
1	C1	1	PLYWOOD12	1	N/A
2	D1	1	PLYWOOD5.5	1	N/A
3	F1	1	PLYWOOD3.6	0	N/A
4	F2	1	PLYWOOD3.6	0	N/A
5	S1	1	PLYWOOD3.6	0	N/A
6	S5-P	1	PLYWOOD3.6	0	N/A
7	S5-S	1	PLYWOOD3.6	0	N/A
8	T1	1	PLYWOOD5.5	0	N/A

- Temporary fixate the deck (part 2) as a template for the correct angle of parts 6 & 7 with the stem (part 1)
- The deck needs to be removed again in a later stage when placing the inner parts of the boat.




keep the deck (2) inside and flush with the top of the sheerstrake (parts 6/7)



- Building technique: 'stitch and glue'
- Drill holes for temporary Iron wire fixation
- When placing shell strakes, first connect to 2 middle frames, then to transom and stem
- When fitted to satisfaction, add epoxy fillets

Cradle Boat "Joey"
STEP 1

REV	DATE	DESCRIPTION	BY	CHK
 MANTA MARINE DESIGN YACHT DESIGN - NAVAL ARCHITECTURE - ENGINEERING <small>INFO@MANTAMARINEDESIGN.COM - WWW.MANTAMARINEDESIGN.COM</small>				
PROJECT DESCRIPTION		CRADLE BOAT	PROJNO	336
DRAWING NO.		336-301	SHEET	1/1
DRAWING TITLE		ASSEMBLY	SCALE	1:--
			DRAWN	PVS
<small>THIS DRAWING, INCORPORATING THE ORIGINAL DECISIONS AND CONCEPTIONS OF MANTA MARINE DESIGN IS PROTECTED BY COPYRIGHT AND PROPERTY OF MANTA MARINE DESIGN. NO PART HEREOF MAY BE COPIED, REPRODUCED, MODIFIED OR USED IN ANY MANNER WITHOUT PERMISSION.</small>				